

Intuitive control

The circular knife sharpening machine RMS-NC for circular knives from Ø 100 to 400 mm. Intuitive control by touchscreen and electronic jogwheel.

- ✓ made for circular knives from Ø 100 – 400 mm
(smaller diameters upon request)
- ✓ programmable zero point offset
- ✓ input of feeding and pause steps
- ✓ stepless adjustment of revolutions of the circular knife
- ✓ burr-free sharpening
- ✓ sparking time mode



Upon request:

- Circular knives smaller than Ø 100 mm
- Meat minzer knives
- Industrial knives
- Special knives for printing houses, paper- and foil industry



Introductory video:

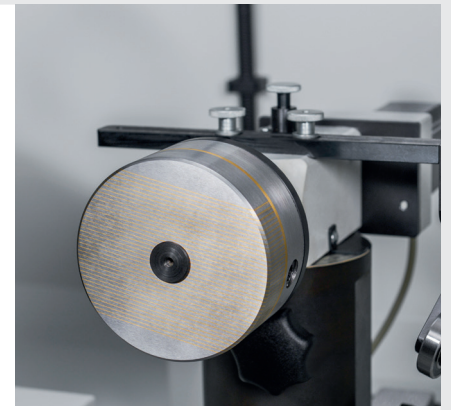


TECHNICAL DATA

Grinding motor:	230 V, 50 / 60 Hz, 1,05 kW with frequency converter, 2850 rpm ⁻¹
Grinding range circular knives:	from Ø 100 to 400 mm
Reducer ring:	Ø 20 x 22 / 30 / 32 / 42 / 30 with 25er flat
Weight net:	188 kg
Dim (L x W x H):	700 x 900 x 1540 mm

BASIC VERSION

- Touchscreen-control
- CBN grinding wheel Ø 125 mm B126
- Spacer rings for boring diameter 20 mm x 22/30/32/42/30 mm with 25 mm surface area
- 1 pair cut protection gloves
- Digital jogwheel
- Pump cooling



CBN grinding wheel

Item No. 11315 CBN B126

Item No. 11314 CBN B76

Diamond grinding wheel

Item No. 11317 D126

Item No. 11316 D76



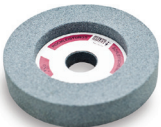
Item No. 15978 Permanent circular magnetic chuck incl. support



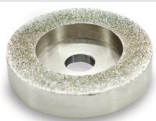
Item No. 11247 Grinding wheel fixture



Item No. 15739 Column short for lower blades
with scale, star knob screw, locking bolt



Item No. 15857 Silicon carbide dresser wheel



Diamond dresser wheel

Item No. 15856 D356



Cleaning- and sharpening stone

Item No. 15855 for diamond grinding wheels



Special support

Item No. 13987 Ø 40 mm for small circular knives
(special sizes upon request)

Cut protection gloves, 5 pair

Item No. 18234 Cutgrip Gr. 9 (M)

Item No. 18235 Cutgrip Gr. 10 (L)

Item No. 18236 Cutgrip Gr. 11 (XL)

Item No. 18237 Cutgrip Gr. 12 (XXL)

Transport casters 1 set

Item No. 15916 (4 pcs)