

Quick, easy handling

Our model for success for the upper claim for twist drills from Ø 2 – 20 mm. Approved patented prism reversing systems ensures top level cutting edge symmetry!

- ✓ simplest handling
- ✓ sharpens twist drills in the range of Ø 2 – 20 mm
- ✓ clearance- and top angle stepless adjustable
- ✓ web thinning
- ✓ optional: countersink sharpening device SVR 20
- ✓ dimensionally stable CBN grinding wheel

Introductory video:

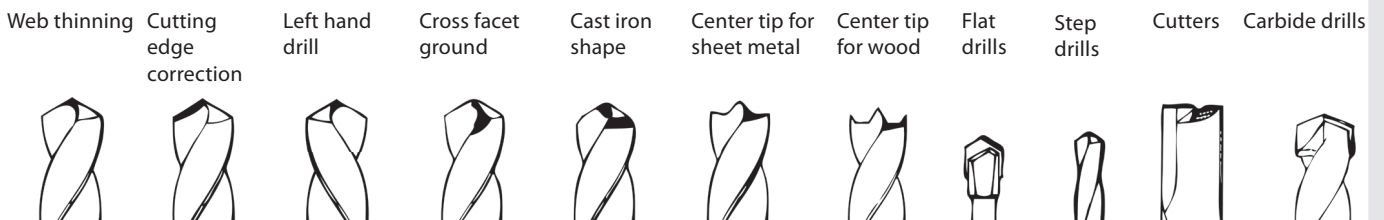


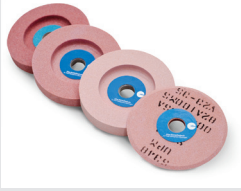
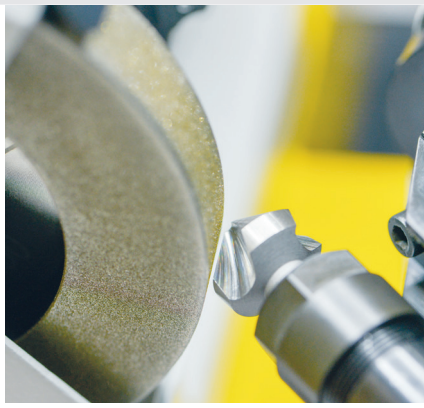
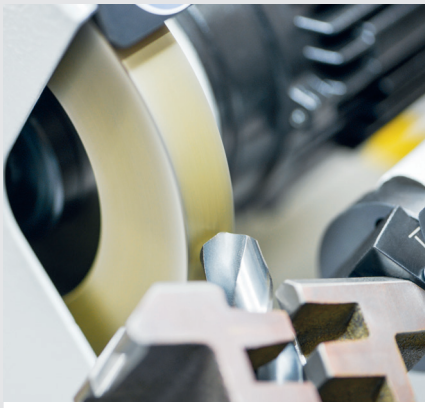
TECHNICAL DATA

Clamping range: Ø 2 to 20 mm
 CBN-grinding wheel: 125 x 20 x 20 x 75 mm
 Motor: 230 V, 50 - 60 Hz, 120 W (also available 110 V, 50 Hz)
 Weight net: 32 kg
 Revolutions: 2840 rpm⁻¹
 Clearance- and top angle: to be adjusted stepless
 Dim (L x W x H): 370 x 310 x 260 mm

BASIC VERSION

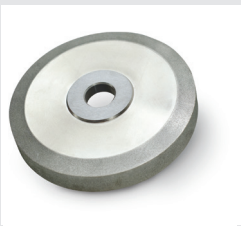
- Clamping prism Ø 2 to 20 mm
- Precision optical lens lighted
- CBN-grinding wheel Ø 125 mm B76
- Granite base slab





Corundum grinding wheel

- Item No. 10895** Grit 60 - 125 x 20 x 20 mm (coarse)
- Item No. 10890** Grit 80 - 125 x 20 x 20 mm (standard)
- Item No. 10891** Grit 180 - 125 x 20 x 20 mm (fine)
- Item No. 10893** Grit 100 - 125 x 05 x 20 mm (HSS-wood drills)
- Item No. 11103** Grit 100 - 125 x 10 x 20 mm



Diamond grinding wheel

- Item No. 14580** wide, complete with support 125 mm, coated on 3 sides, D76/3 for carbide drills
- Item No. 14581** thin, complete with support 125 mm, coated on 3 sides, D76/3 for carbide wood drills
- Item No. 16490** CBN-grinding wheel B76 (standard)
- Item No. 17073** CBN-grinding wheel B126
- Item No. 17556** CBN-grinding wheel B46



Item No. 18658 Grinding wheel fixture



Morse taper sleeves

- Item No. 10901** for short MK 1- drills
- Item No. 10902** for short MK 2- drills



Cleaning- and sharpening stone

- Item No. 15855** for diamond grinding wheels



Support sleeve for short welding point drills

- Item No. 10900** 5 and 6 mm
- Item No. 10976** 8 and 10 mm



Item No. 10889 Magnetic depth stop for cutters



Item No. 10881 Can for cross hole countersinks



Countersink sharpening device SVR 20

- Item No. 10875** incl. collet 10 mm



Collet set

- Item No. 14348** for SVR 20 (Ø 6, 8, 12 mm)



Grinding wheel dresser with rotating diamond

- Item No. 10908** only for corundum grinding wheels

Item No. 12385 Adaptor cable 230 V Schuko / 400 V CEE

Item No. 10883 Retrofit sharpening center with diamond cup-wheel