

Controllable versatility on 4 CNC axis

This machine is equipped with a high performance industrial PC with touchscreen and digital jogwheel. This PC controls two linear and a rotary axis simultaneously. The geometry of grinding is easily programmable by G-code.

- ✓ SK 40 support for ER collets
- ✓ for cutters up to Ø 150 mm, cutter grinding of spiral and face as well as chip space
- ✓ built on solid IPC-basis, freely programmable by G-code
- ✓ based on Linux software
- ✓ integrated electronic jogwheel



TECHNICAL DATA

Grinding motor:	230 V, 50 / 60 Hz, 0,37 kW, 2850 rpm ⁻¹
Grinding range cutter:	max. Ø 150 mm
Support of rotary axis:	SK 40
CNC-axis:	4 ; X Y Z A
Weight net:	300 kg
Weight control unit:	37 kg
Dim (L x W x H):	1200 x 900 x 1780 mm

BASIC VERSION

- Touchscreen-control
- Cup wheel optional as CBN or diamond
Ø 125 mm B76 or D76
- Grinding wheel dresser
- Jogwheel integrated in the control unit
- Pump cooling
- ready made CNC-programms
- 5Mpix camera system with holder and software package
for Windows and Mac
- Support SK40+ Ø 10 mm ER collet



Item No. 18305 **High frequency spindle and internal grinding device**
6000-24000 RPM, 0,8 kW,
incl. frequency transformer with wiring set,
ER11collets 3+6 mm



Item No. 18051 **FSM-CNC saw blade sharpening option**
Ø 100 - 450 mm
Content: horizontal round axis, 2 clamping flanges, spacer rings,
diamond grinding wheel D 76, support ER32, magnetic clamping,
USB stick with several programs

Item No. 18782 **FSM-program suite**
(48 programs) for HSS hacksaw blades with tooth shape T3-T18 DIN1838
incl. 2 CBN grinding wheels D=75+125 mm incl. grinding wheel support
provided that: FSM-CNC option saw blades item No. 18051 is present.



Item No. 18440 **Option: 3D-edge finder for FSM-CNC**



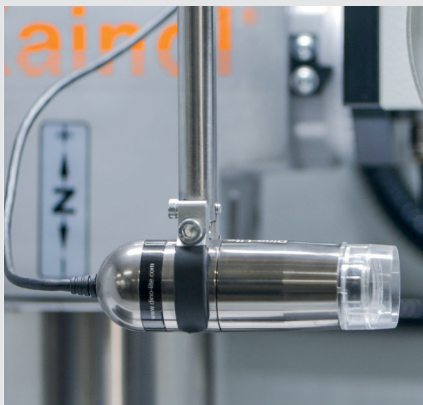
Item No. 17304 **CBN cup grinding wheel**
CBN Ø 125 mm, B126
Item No. 17303 **CBN cup grinding wheel**
CBN Ø 125 mm, B76
Item No. 17306 **Diamond cup grinding wheel**
Ø 125 mm, D126
Item No. 17305 **Diamond cup grinding wheel**
Ø 125 mm, D76

Item No. 18293 **CBN cup grinding wheel**
CBN Ø 100 mm, B126
Item No. 18292 **CBN cup grinding wheel**
CBN Ø 100 mm, B76
Item No. 18295 **Diamond cup grinding wheel**
Ø 100 mm, D126
Item No. 18294 **Diamond cup grinding wheel**
Ø 100 mm, D76



Item No. 18297 **CBN circumference grinding wheel**
CBN Ø 125 mm, B126
Item No. 18296 **CBN circumference grinding wheel**
CBN Ø 125 mm, B76
Item No. 18299 **Diamond circumference grinding wheel**
Ø 125 mm, D126
Item No. 18298 **Diamond circumference grinding wheel**
Ø 125 mm, D76

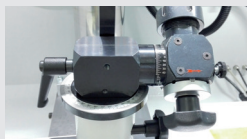
Item No. 18304 **PCD-dressing device**



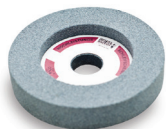
Item No. 18658 Grinding wheel fixture



Item No. 19119 Special-Grinding wheel fixture „Twin“



Item No. 16050 Precision grinding head ER32
with indexing, 10 mm chuck and laser adjustment



Item No. 15857 Silicon carbide dresser wheel



Item No. 15856 Diamond dresser wheel
D 356



Cleaning- and sharpening stone
Item No. 15855 for diamond grinding wheels



Chuck set ER32
Item No. 17675 18 pcs. 3,0 - 20,0 mm, premium quality, 5μ class, in wooden box

Cut protection gloves, 5 pair

Item No. 18234 Cutgrip Gr. 9 (M)

Item No. 18235 Cutgrip Gr. 10 (L)

Item No. 18236 Cutgrip Gr. 11 (XL)

Item No. 18237 Cutgrip Gr. 12 (XXL)

Transport casters 1 set

Item No. 15916 (4 pcs.)

THE DEVELOPMENT OF BESPOKE SOLUTIONS

The majority of contemporary tools require specific adaptations to the machine, tool fittings and software. To this end, we develop and produce special chucking tools, translate complex cutting geometries into programme codes and even develop bespoke form grinding wheels. As such, in addition to the “naked” machine hardware, we also provide bespoke turn-key solutions designed to meet your special requirements - all from a single source.

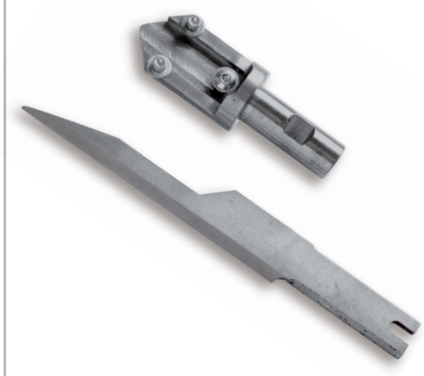
We have already implemented numerous customer-specific projects.

Here are a few examples:

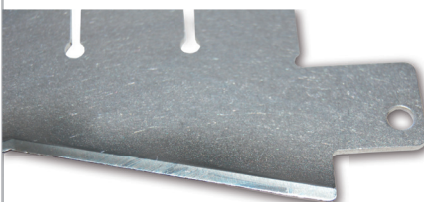
Video



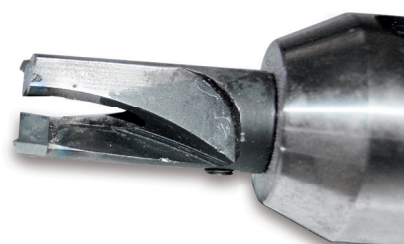
ROBOTIC ROUGHING BLADE



DICER



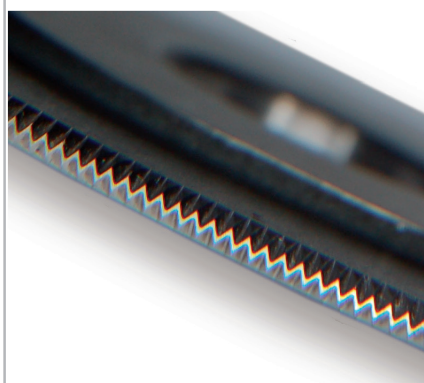
FACE-MILLING CUTTER FOR WOOD PROCESSING



PIN DRILL



ZIGZAG BLADE



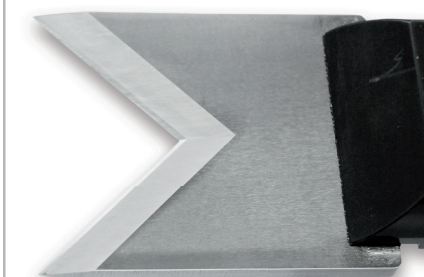
INDUSTRIAL POULTRY BLADE



ULTRASONIC PLOTTER BLADE



V-BLADE



LATHE BLADE

